



「Water certainly」



# Water-link drinking water



## Water certainly

- Raw water source is the river Meuse
- 2 production sites North & South
- Production capacity 640.000 m<sup>3</sup>/day
- Customers: 634.704
- 40 % volume of the drinking water in Flanders

**Mission**  
**Vision**

Water-link wants to inspire everyone to fully use the strength of water.

# Water-link objectives



## Continuous innovation

Trendsetter in the new  
water landscape.



## Investing in smart partnerships

Preferred partner in the new  
water landscape.



## Building a future proof team

Preferred employer in the  
new water landscape.



# **Waterkracht**

## **Joining forces for sustainable process water**

# Waterkracht – Facts & Figures



20 billion litres of wastewater per year will be repurposed into cooling water for the Port of Antwerp-Bruges



Equivalent to water consumption by 600,000 residents or 400,000 households



Circular project as part of the Flemish Government's Blue Deal



100 million EUR direct and indirect investments

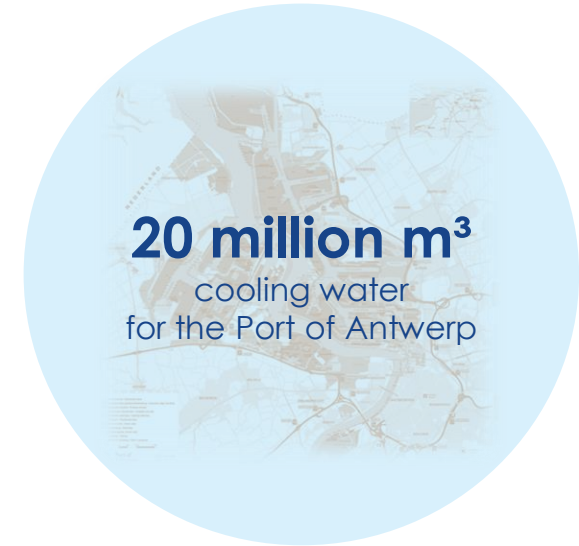
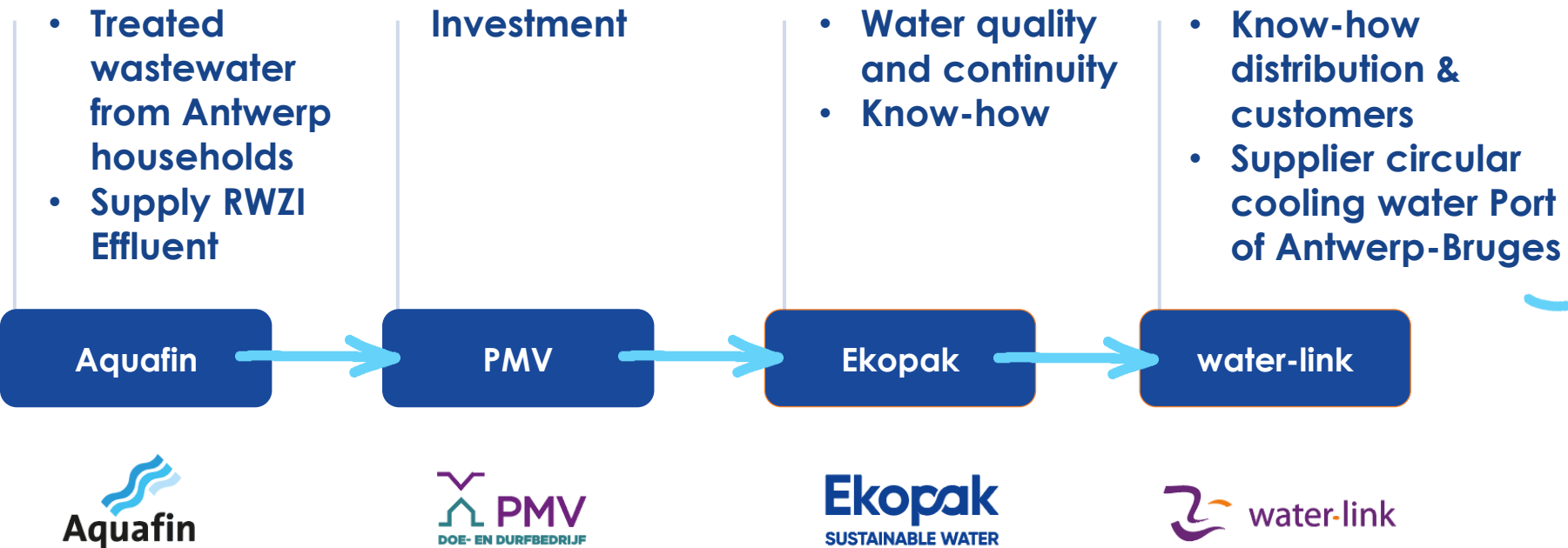


NextGen Site at Port of Antwerp-Bruges



Operational in 2025

# Project "Waterkracht" - partners

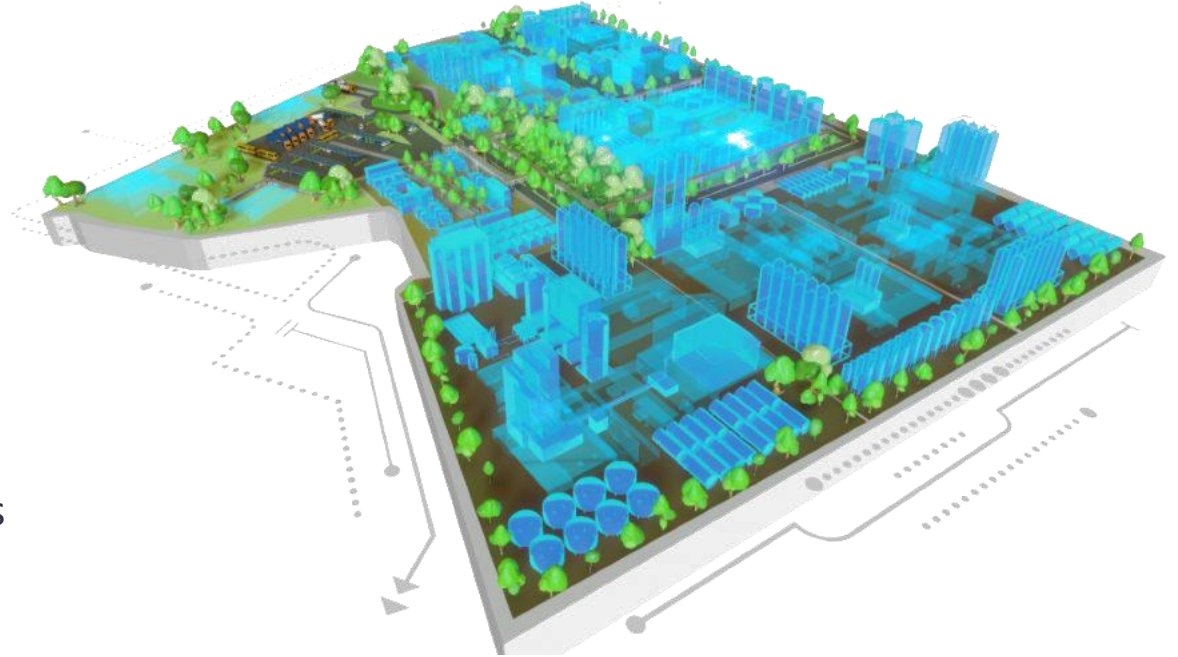




# In the center of the Innovation hub of the Port of Antwerp-bruges

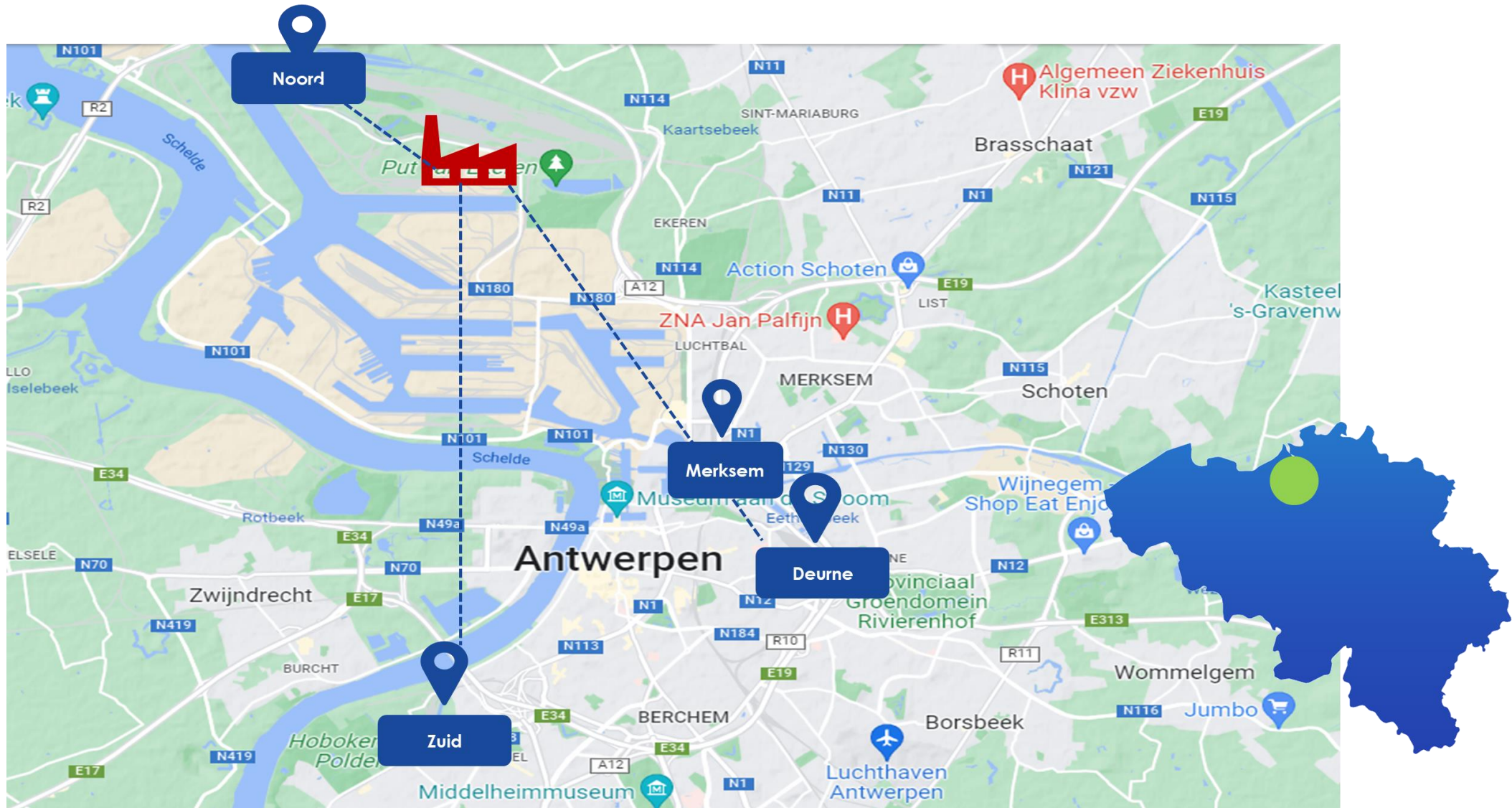
## Waterkracht, on a plot in the NextGen district

The project will be realised on the NextGen site at the Port of Antwerp-Bruges. A new pipe distribution network allows industrial customers at both the left and right bank to use the circular cooling water.





# Geographical location



# Pipeline distribution network & plant layout



Pipeline distribution network



Layout plant - (capacity 2000-4000 m<sup>3</sup>/h, footprint 1 ha)



# **Our fight** **against drought**



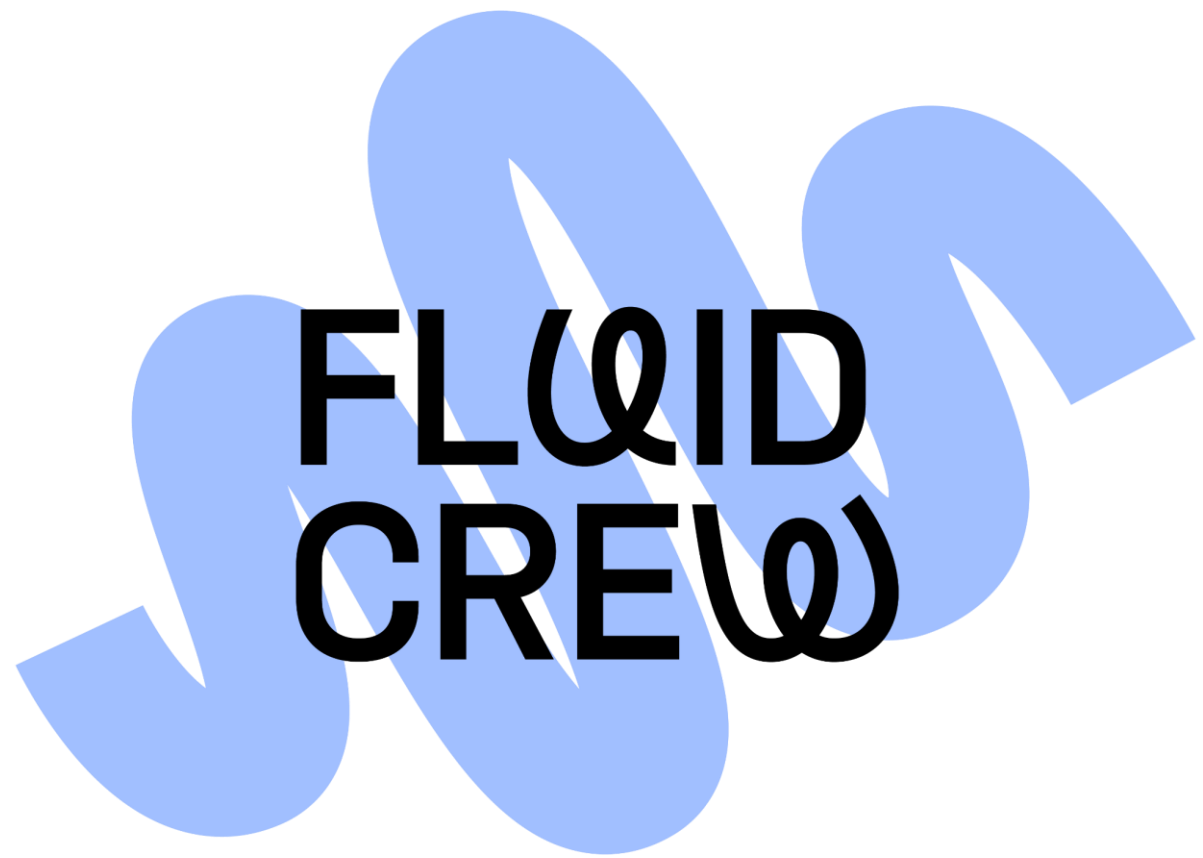


 water.link





water-link



**FLUID  
CREW**